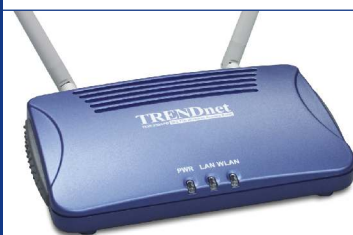


# TEW-230APB

802.11b 11Mbps  
Wireless Access Point

## Quick Installation Guide

Version 1.22.04



Copyright ©2004. All Rights Reserved. TRENDware International, Inc.

### 1. Prepare for Installation

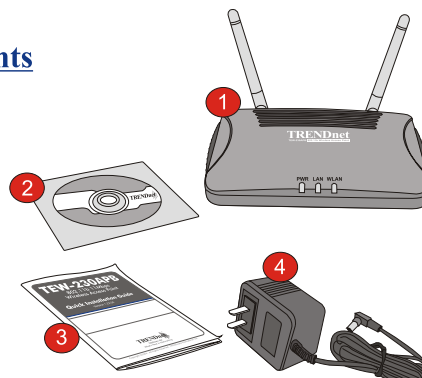
Thank you for purchasing the TEW-230APB, With this Access Point you will be able to share your files and resources between wireless users.

This guide will help you set-up and configure your Access Point. Following the installation instructions should be quick and easy. If you run into problems please refer to the Troubleshooting section or the mode detailed installation procedures on the CD User's Guide. If you need further technical support, please visit [www.trendnet.com](http://www.trendnet.com) or call our technical support by phone.

#### Verify Package Contents

Please check to make sure you have everything in the box:

1. TEW-230APB
2. Utility CD-ROM
3. Quick Installation Guide
4. AC Power Adapter



#### Verify Equipment

Before setting up the Access Point, you should have:

1. A Computer with a Wired or Wireless network card.
2. TCP/IP protocol installed on the Wireless Computer.
3. A Web Browser such as Internet Explorer (5.0 or higher) or Netscape Navigator (4.7 or higher).
4. A Hub or Switch connecting your existing wired network.
5. An RJ-45 Network Cable for connecting the Access Point to your network Switch.

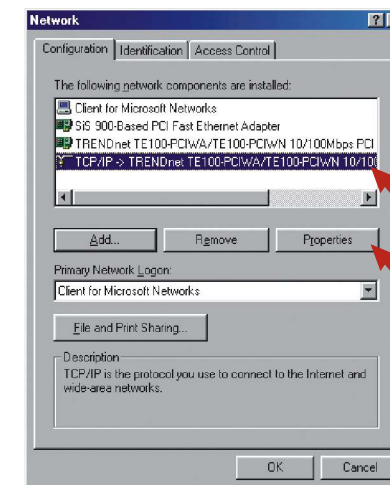
1

### 3. Setting up the Access Point

The Access Point has a default IP address 192.168.1.100, therefore to be able to access and configure the Access Point, the computer's TCP/IP settings need to be changed.

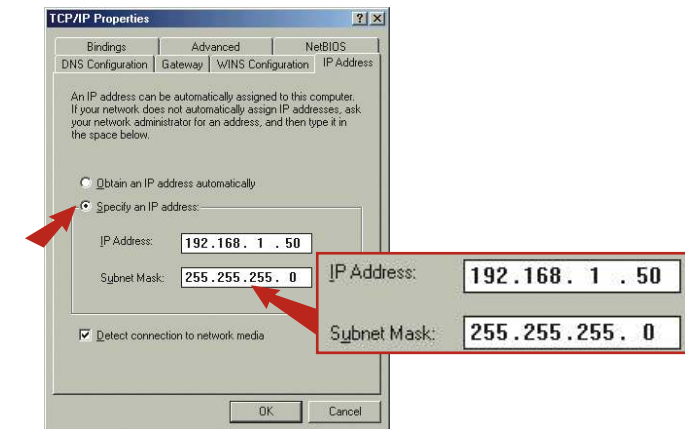
#### Windows 95/98/98SE/ME

1. Find the **Start** button located on Desktop.
2. Click **Start**; click **Settings** and then click on **Control Panel**.
3. Double-Click the **Network** Icon and the Network Properties box will appear
4. Under the **Configuration** tab, locate and select **TCP/IP** with the corresponding network card. Then click on the Properties button and the TCP/IP Properties window will appear.

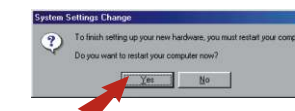


4

5. Under the **IP Address** tab, click on **Specify an IP address** and enter 192.168.1.50 for IP address and 255.255.255.0 for Subnet Mask and click **OK**.



6. Click **OK** on the Network Box.
7. At this point, the installation may require files from your Windows CD-ROM. If this happens insert Windows 98 CD-ROM into your CD-ROM drive and select CD-ROM drive to load the files.
8. After the files load, the System Settings Change message appears, click **Yes** to reboot your system.



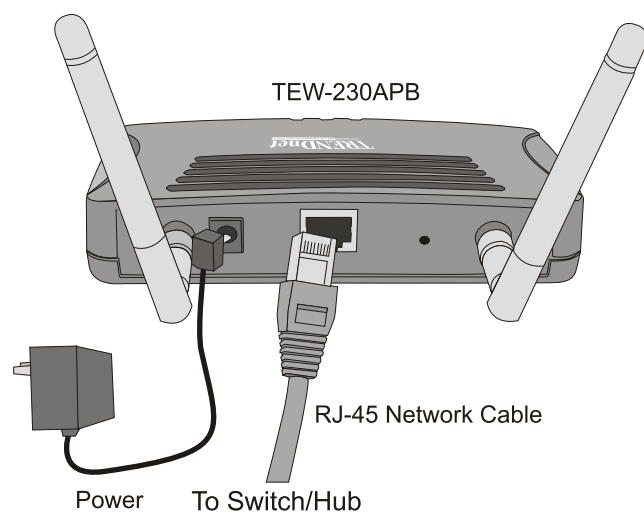
Note: If the message does not appear, you need to go to Start and click Restart.

9. Now your computer is ready to access and configure the Access Point.

5

### 2. Install Hardware

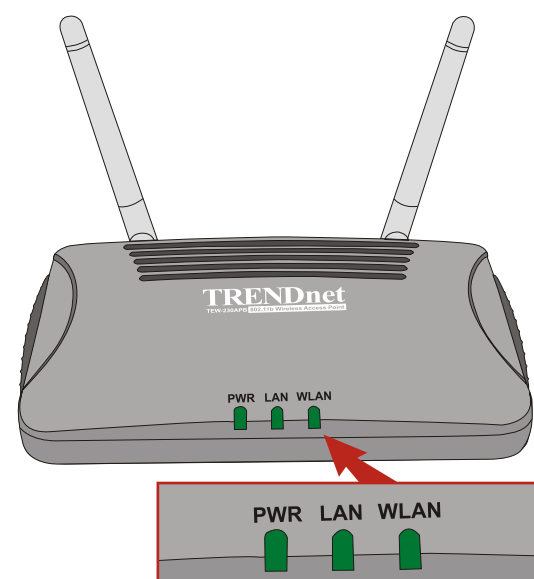
1. Locate an optimum location for the Access Point. The best place for the Access Point is usually at the center of your wireless network.
2. Connect the RJ-45 network cable to the Access Point, then connect the other end of the network cable to a Switch or Hub. So the Access Point is connected to your 10/100 network.
3. Connect the power adapter to the Access Point. Make sure you use the power adapter supplied with the Access Point, using a different power adapter may damage the unit.



2

#### Verify Hardware Installation

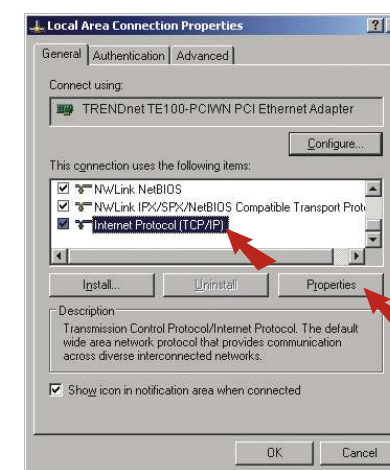
Check to make sure the following Access Point front panel lights are on: Power, LAN, WLAN.



3

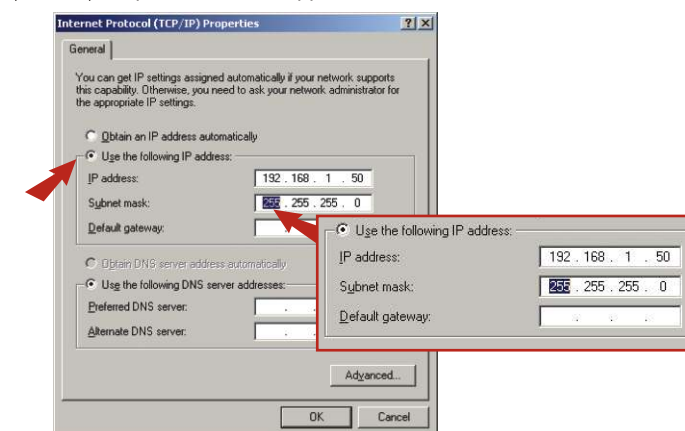
#### Windows 2000/XP

1. Find **Start** button located on Desktop.
2. Click **Start**; click **Settings** and then click on **Control Panel**.
3. Double-Click the Network Connection Icon.
4. Right-Click on the Local Area Connection icon and then click on Properties. The Local Area Connection Properties box will appear.



6

5. Under the **General** tab, locate and select Internet Protocol TCP/IP and then click Properties. The Internet Protocol (TCP/IP) Properties box will appear.



6. Click on **Use the following IP address**; then enter 192.168.1.50 for IP Address and 255.255.255.0 for Subnet, then click **OK**.
7. Click **OK** on the Local Area Connection Properties box to close.
8. Now your computer is ready to access and configure the Access Point.

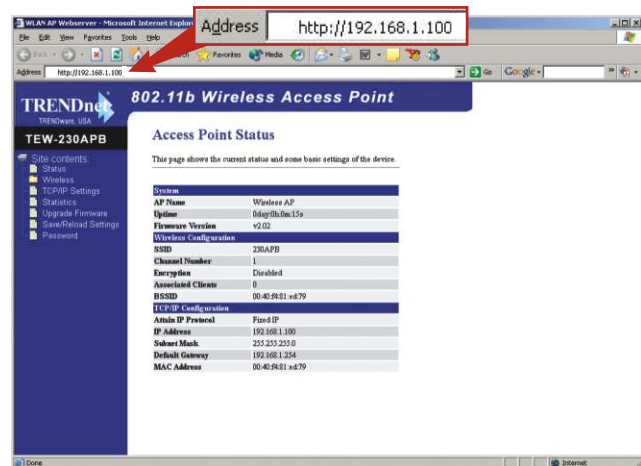
7

Note: If you are using a wired computer to configure this Access Point, please connect this computer to the same Switch or Hub the TEW-230APB is connected to.

## 4. Configure the Access Point

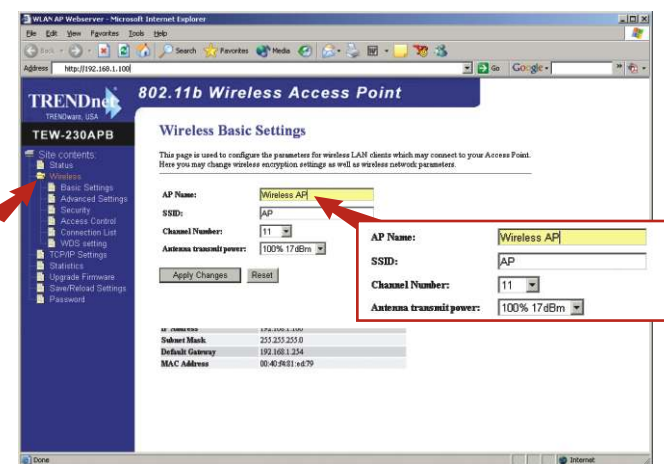
### From a Wired Computer

1. Open a browser (Internet Explorer or Netscape) and enter <http://192.168.1.100> in the address bar then press the Enter key. The TEW-230APB main configuration page will appear.



8

2. To configure the **Wireless Settings**, click on the Wireless option from the left panel and select Basic Wireless Settings, the setting window will appear.

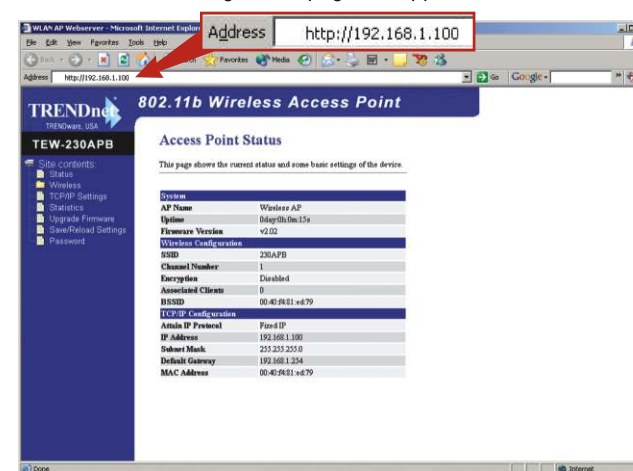


3. Enter any **AP Name** you would like to set to this Access Point. Enter a valid SSID that your wireless network will be using and select the channel you would like to use (For example: Wireless AP, Home AP, or Office AP).
4. After entering the information, click on Apply Changes to submit the information.
5. Now the Access Point is ready for your Wireless Network.

For detail information about TEW-230APB's configuration and advanced settings, please find the information from the Troubleshooting section, User's Guide on the CD-ROM or from the TRENDnet website [www.trendnet.com](http://www.trendnet.com).

9

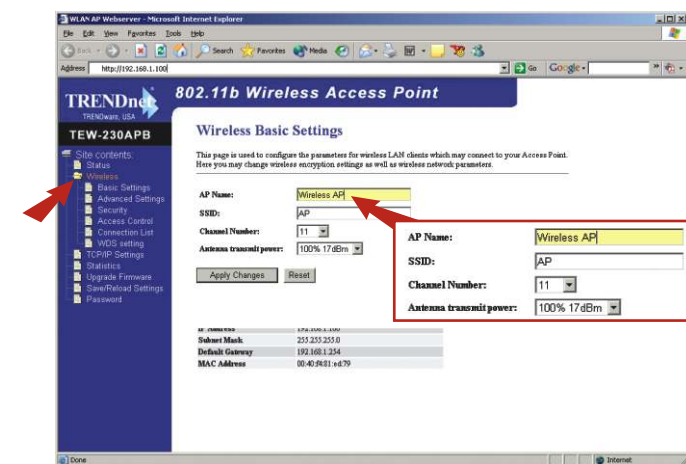
4. Now, open up a browser (Internet Explorer or Netscape) and enter <http://192.168.1.100> in the address bar; then press **Enter** key. The TEW-230APB main configuration page will appear.



12

5. To configure the **Wireless Settings**, click on the Wireless option from the left panel and select Basic Wireless Settings; the settings window will appear.

6. Enter any AP Name you would like to set this Access Point, a valid SSID that your wireless network will be using and select the channel you would like to use (For example: Wireless AP, Home AP, or Office AP).



13

7. After entering the information, click on **Apply Changes** to submit the information.
8. Now the Access Point is ready for your Wireless Network.

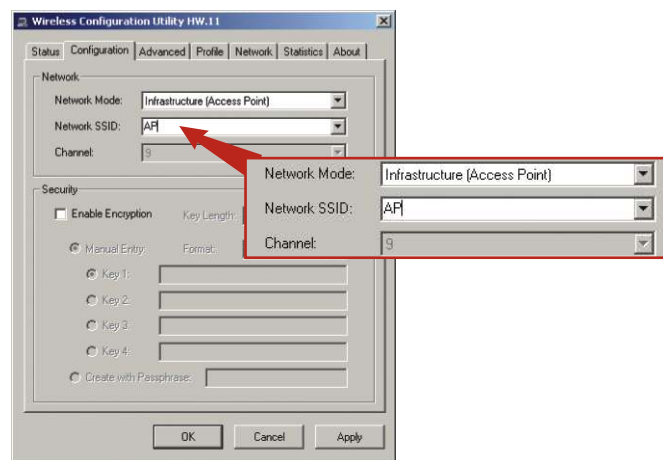
For detail information about TEW-230APB's configuration and advanced settings, please find the information from the Troubleshooting section, User's Guide on the CD-ROM or from the TRENDnet website [www.trendnet.com](http://www.trendnet.com).

### From a Wireless Computer

(Using TRENDnet's TEW-226PC as example in this section)

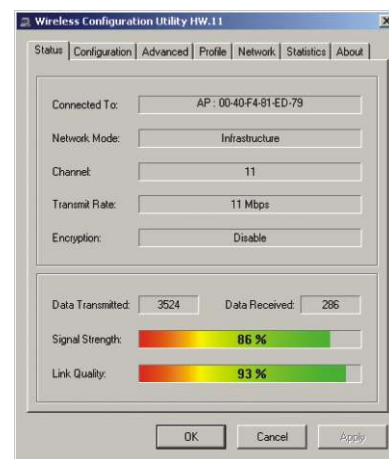
The default settings of the Access Point are:  
SSID – AP  
Channel - 11

1. On your wireless computer, open up your Wireless Utility Program
2. Go to the **Configuration** section and select Infrastructure for Network Mode. Enter AP for the SSID and select Channel 11 if applicable; then click **Apply**.



10

3. Go to **Status** section of your Wireless Utility Program. It will show your connection information to the Access Point and this means you are connected to the Access Point.



11

## 5. Troubleshooting

**Q1:** I specified the IP address <http://192.168.1.100> in my internet browser but the browser comes back with "The page cannot be displayed". How can I get into the TEW-230APB web configuration page?

**A1:** Please check your hardware and TCP/IP settings again by checking through sections 1~3, make sure the Power, Link on the Access Point's front panel are on and the TCP/IP configurations are done properly. Then try browsing to the <http://192.168.1.100> again.

**Q2:** If my network's IP is different than the Access Point's range, what should I do?

**A2:** You can still configure the access point first, then after all the settings are done, you can go to the Access Point's configuration page and then click on TCP/IP settings to change an IP address for the Access Point to meet your network setting.

**Q3:** After I configured the Access Point to meet my existing network's settings successfully, I have a problem connecting to my network via wireless computers.

**A3:** If you have a DHCP server in your network, you need to go into TCP/IP settings again and change back to "Obtain an IP automatically" for Windows 98/ME and "Obtain an IP Address automatically" for Windows 2000/XP to allow the PC to regain an IP address from your DHCP server.

**Q4:** All the settings are set correctly, but I still can't use the Access Point, what should I do?

**A4:** You can find additional information from the User's Guide or contact Technical Support by email or phone.

14

P/N: 1907WLB20066100

15